

B FLEX COUPLINGS TYPE RB



Rathi B-FLEX couplings consist of a set of resilient BARREL shaped bushes with pins & nuts and two flanged hubs of graded cast iron.

These special BARREL shaped bushes permit the MISALIGNMENT IN ALL DIRECTIONS and give extra torsional flexibility as compared to plain bushes. These couplings are suitable for general engineering application requiring reliable power transmission even under conditions of shaft misalignments which are often unavoidable.



Pin-Bush Assembly



Bush
(Natural Rubber/PU/H-Trans)

FEATURES

Simplicity Of Construction

Easy to assemble & disassemble.
Suitable independent running of the drive.

Varying Stiffness Characteristics

Special barrel shaped bushes provide progressively increasing stiffness characteristics, hence ensure effective shocks & vibration absorption.

No Lubrication

B-FLEX couplings never require lubrication of any kind.

Simple / Easy Maintenance

No complicated mechanism to demand adjustment or maintenance. Inspection and replacement of bushes is easy and bushes can be quickly fitted without dismantling or moving either of coupled shafts.

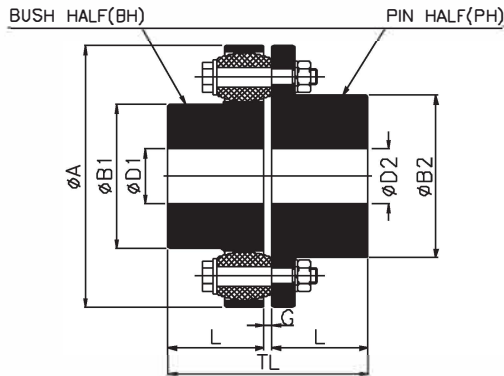
Low Operational Cost

Only wearing part is low cost bushes which make coupling economical in long run.

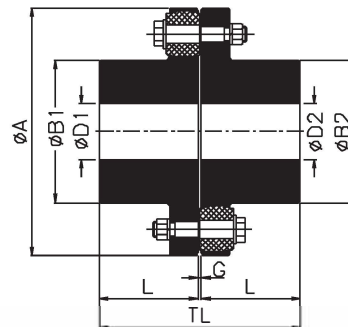
Smooth & Quiet Operation

Reduces vibration & noise arising from severe torque fluctuations.

B FLEX COUPLINGS TYPE RB



UPTO SIZE RB-360



FROM SIZE RB-400 ONWARDS

TECHNICAL DATA

Coupling Size	Coupling Rating @100RPM						Max. Speed rpm	Min. Bore	Max. Bore		øA	øB1	øB2	L	G	TL	Wt. in kg	M.I.(WR ²) in ² kgm ²	Max. Misalignment		
	Synthetic Rubber		Polyurethane		H - Trans				øD1	øD2									Axial (mm)	Radial (mm)	Angular
	HP	KW	HP	KW	HP	KW															
RB-105-3	1.34	1	2	1.5	3.35	3	7200	11	30	32	105	48	50	45	2-6	94	2	0.0030	2	0.3	1°
RB-116-4	2.01	1.5	3	2.3	5.03	4	6100	12	39	42	116	60	68	45	2-6	94	2.6	0.0050	2	0.3	1°
RB-125-4	2.28	1.7	3.4	2.6	5.7	4	5500	14	45	50	125	68	78	50	2-6	104	3.1	0.0070	2	0.4	1°
RB-144-6	4.42	3.3	6.6	5	11.06	8	4900	18	50	60	144	82	91	55	2-6	114	4.3	0.012	2	0.4	1°
RB-162-6	7.37	5.5	11.1	8.3	18.43	14	4500	22	60	65	162	89	100	60	2-6	124	7.5	0.030	2	0.4	1°
RB-178-6	8.98	6.7	13.5	10.1	22.45	17	3800	24	70	75	178	105	115	70	2-6	144	10	0.040	2	0.5	1°
RB-198-10	17.42	13	26.1	19.5	43.55	33	3400	28	80	90	198	124	135	80	2-6	164	13	0.062	2	0.5	1°
RB-228-11	28.14	21	42.2	31.5	70.35	53	3000	28	90	100	228	133	146	90	4-10	187	18	0.100	3	0.6	1°
RB-252-12	42.88	32	64.3	48	107.2	80	2700	38	105	115	252	156	167	100	4-10	207	24	0.17	3	0.6	1°
RB-285-11	64.32	48	96.5	72	160.8	120	2400	48	115	125	285	170	186	110	4-10	227	35	0.31	3	0.7	1°
RB-320-12	85.76	64	128.6	96	214.4	160	2100	55	125	135	320	196	212	125	4-10	257	51	0.53	3	0.7	1°
RB-360-11	124.62	93	186.9	139.5	312	233	1900	65	135	150	360	212	232	140	4-12	288	73	1.02	4	0.9	1°
RB400-10	168.84	126	253.3	189	-	-	1700	75	160	160	410	230	160	4-12	328	101	1.70	4	1.1	1°	
RB-450-12	261.30	195	392	292.5	-	-	1500	85	180	180	450	260	180	4-12	368	137	2.90	4	1.1	0.5°	
RB-500-14	361.80	270	542.7	405	-	-	1350	95	200	500	290	200	4-12	408	180	4.70	4	1.1	0.4°		
RB-560-10	435.50	325	653.3	487.5	-	-	1200	95	225	560	320	220	4-8	446	278	10.70	2	1.5	0.3°		
RB-630-12	589.60	440	884.4	660	-	-	1050	100	250	630	355	240	4-8	486	365	17.4	2	1.5	0.3°		
RB-710-12	1051.90	785	1577.9	1177.5	-	-	950	100	260	710	385	260	5-9	527	516	33	2	1.8	0.3°		
RB-800-14	1402.98	1047	2104.5	1570.5	-	-	850	100	280	800	420	290	5-9	587	691	53	2	1.8	0.3°		
RB-900-16	2174.82	1623	3262.2	2434.5	-	-	750	100	305	900	465	320	5-9	647	927	86	2	1.8	0.3°		
RB-1000-18	2736.28	2042	4104.4	3063	-	-	680	125	320	1000	515	350	5-10	708	1224	142.8	2	2.0	0.1°		
RB-1120-18	3788.18	2827	-	-	-	-	600	135	350	1120	560	380	6-11	769	1584	231	2	2.2	0.1°		
RB-1250-20	4841.42	3613	-	-	-	-	550	150	380	1250	610	420	6-11	849	2070	367.5	2	2.4	0.1°		
RB-1400-20	7437.00	5550	-	-	-	-	490	175	440	1400	700	480	6-12	969	3060	693	2	2.7	0.1°		
RB-1600-24	10524.36	7854	-	-	-	-	430	200	480	1600	770	540	6-12	1089	3960	1155	2	3.0	0.1°		
RB-1800-22	13681.40	10210	-	-	-	-	380	225	540	1800	870	600	8-16	1212	5760	2205	2	3.4	0.1°		
RB-2000-26	18242.76	13614	-	-	-	-	340	250	600	2000	960	660	8-16	1332	7020	3255	2	3.8	0.1°		

- PH = Pin Half (Drive) upto size 360
- BH = Bush Half (Driven) upto size 360

SPARE PARTS

Coupling SIZE	Pin Half Part No.	Bush Half Part No.	Pin + Washer Part No.	Bush Part No.	No. Of Pin-Bush Assy./Coupling	Nut Size
RB-105-3	RB-105-3/1	RB-105-3/2	RB/P-2	RB/B-2	3	M8
RB-116-4	RB-116-4/1	RB-116-4/2	RB/P-2	RB/B-2	4	M8
RB-125-4	RB-125-4/1	RB-125-4/2	RB/P-2	RB/B-2	4	M8
RB-144-6	RB-144-6/1	RB-144-6/2	RB/P-2	RB/B-2	6	M8
RB-162-6	RB-162-6/1	RB-162-6/2	RB/P-3	RB/B-3	6	M10
RB-178-6	RB-178-6/1	RB-178-6/2	RB/P-3	RB/B-3	6	M10
RB-198-10	RB-198-10/1	RB-198-10/2	RB/P-3	RB/B-3	10	M10
RB-228-11	RB-228-11/1	RB-228-11/2	RB/P-4	RB/B-4	11	M14
RB-252-12	RB-252-12/1	RB-252-12/2	RB/P-4	RB/B-4	12	M14
RB-285-11	RB-285-11/1	RB-285-11/2	RB/P-5	RB/B-5	11	M16
RB-320-12	RB-320-12/1	RB-320-12/2	RB/P-5	RB/B-5	12	M16
RB-360-11	RB-360-11/1	RB-360-11/2	RB/P-6	RB/B-6	11	M20
RB-400-10		RB-400-10	RB/P-7	RB/B-7	10	M20
RB-450-12		RB-450-12	RB/P-7	RB/B-7	12	M20
RB-500-14		RB-500-14	RB/P-7	RB/B-7	14	M20
RB-560-10		RB-560-10	RB/P-8	RB/B-8	10	M36
RB-630-12		RB-630-12	RB/P-8	RB/B-8	12	M36
RB-710-12		RB-710-12	RB/P-9	RB/B-9	12	M42
RB-800-14		RB-800-14	RB/P-9	RB/B-9	14	M42
RB-900-16		RB-900-16	RB/P-9	RB/B-9	16	M42
RB-1000-18		RB-1000-18	RB/P-9	RB/B-9	18	M42

- NOTES** - * All dimensions are in mm. Unless otherwise specified.
 * Weight & inertia figures are at maximum bores.
 * Each coupling is capable of withstanding maximum torque of 3 times of nominal torque for short durations such as during start up.
 * For vertical installation contact RATHI.