

JAW LOVEJOY - MARTIN - RATHI

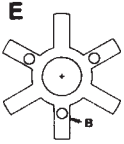


Directive 94/9/CE Certificated

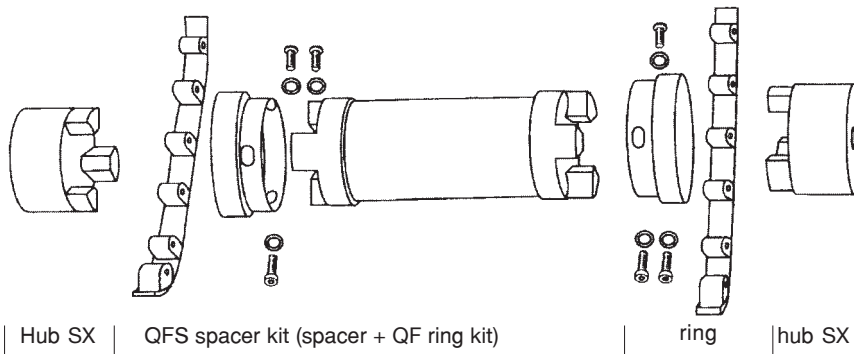
Ideal for light, medium, and heavy duty electrical motor and internal combustion power transmission applications.



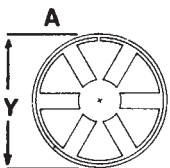
ELASTOMERS



Standard "E" type:
spider



"QF" type:
Martin NBR-URETHANE-
HYTREL with a collar to be
attached to the hub.



"A" type: ring shape



"IN-SHEAR" type: instead of the spider being compressed in between the interlocked jaws of each hub, the In-Shear spider has the hubs drawn apart with the jaws aligned axially.

Materials:

NBR: black, rubber nitrile butadiene, elastic.

HYTREL: white, less elastic and more resistant.

URETHANE: blue, good resistance to oil and chemicals.

BRONZE: porous oil-impregnated, rigid.

Type	Temperature	Shore Hardness	Dampening Capacity	Misalignment		Resistance		Factor de Par
				ang. degrees	paral. mm.	oil	chemical	
NBR	-40 +100 C	80 ShA	++	1	0,38	+	+	1
URETHANE	-34 +71 C	90 ShA	+	1	0,38	++	+	1,5
HYTREL	-51 +121 C	55ShD	+	0,5	0,38	++	++	3
BRONZE	-40 +232 C	rígido	0	0,5	0,25	+++	++	3 máx. 250 rpm.

0 = Low

+ = Regular

++ = Good

+++ = Excellent

Other materials under request:

Stainless Steel (corrosion resistant)

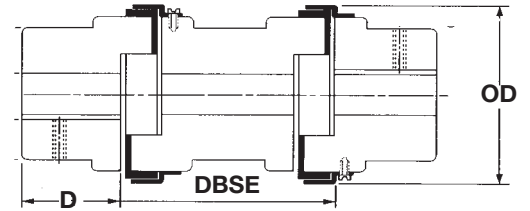
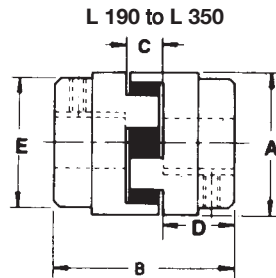
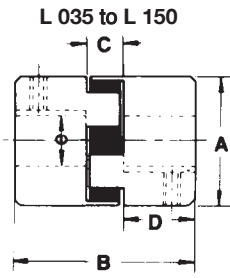
Sintered (sizes L. 190 - L. 225)

Bronze (anticorrosion)

Aluminum (ligh - low inertia)

Steel

JAW LOVEJOY - MARTIN - RATHI



DBSE - 100 mm - 140 mm - 180 mm
 QFS (2 hubs + 1 QF
 ring kit + 1 QFS spacer kit)

DESCRIPTION



The hubs are simetrical and with H7 finished bores, standard keyways and set screws. Spacers made of aluminum. The Martin hubs are blued.

FEATURES AND DIMENSIONS IN MM							NOMINAL TORQUE Nm		
Type	A	OD	B	D	E	Max. Bore	E + A	U	H
							NBR	URETHANE	HYTREL
L. 035	15,9	-	20,6	6,7	15,9	10	0,46	0,60	1
L. 050	27,4	-	43,6	15,9	27,4	16	4	6	11
L. 070	34,5	-	50,8	19,1	34,5	19	6	8	14
L. 075	44,5	-	54,0	20,6	44,5	24	12	15	27
L. 090	53,6	65	54,0	20,6	53,6	25	20	32	47
L. 095	53,6	65	63,5	25,4	53,6	28	26	32	64
L. 100	64,3	78	89,0	34,9	64,3	35	47	70	141
L. 110	84,1	96	108,0	42,9	84,1	42	89	134	256
L. 150	95,3	111	114,3	44,4	95,3	48	141	212	405
L. 190	114,3	129	123,8	49,2	101,6	55	190	285	512
L. 225	127,0	142	136,5	55,6	108,0	65	265	398	768
L. 276	-	173	200	80	127	75	532	798 (E)	1330 (QF)
L. 295	-	253	238	95	162	95	1279	1919 (E)	3197 (QF)
L. 2955	-	253	264	108	180	105	2132	3198 (E)	5330 (QF)
L. 300	-	272	283	115	180	105	3047	4570 (E)	7617 (QF)
L. 350	-	323	309	128	200	115	4308	6462 (E)	10770 (QF)

(E) Urethane spiders (L. 276 to L. 350 models)

(QF) Hytrel (L. 276 to L. 350 models)

Standard bores

Available in inches

○ Finished bores + keyway+ set screw

● Finished bore without keyway

Type	6	8	9	10	11	12	14	15	16	17	18	19	20	22	24	25	28	30	32	35	38	40	42	45	48	50	55	60	65	Hub diameter
035	○	○																												
050	○	○	○	○	○	○	○	○	○																					
070			○	○	○	○	○	○	○	○	○																			
075				○	○	○	○	○	○	○	○	○	○																	
090				○																										
095					○	○	○	○	○	○	○	○	○	○																
100						○																								
110							○																							
150								○																						
190									○																					
225										○																				