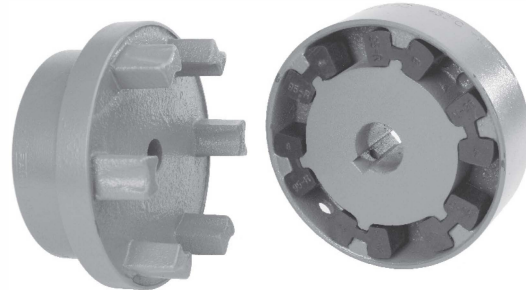


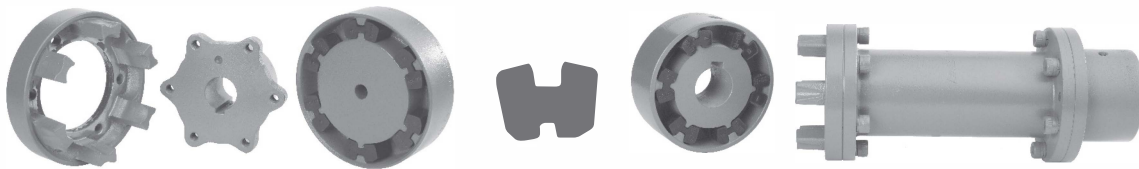
## N-FLEX RN COUPLINGS TYPE RN / RNS



Rathi N-Flex couplings consists of graded cast iron hubs and a set of 'H' shaped highly resilient blocks which accommodates parallel, angular and axial misalignments & absorbs torsional vibrations. Rathi N-Flex spacer couplings (Type - RNS) are suitable for 'Back Pullout Pumps' in which the impeller can be disassembled without disturbing motor and pump from the base frame.



RN (B)



RN (A)

H Insert  
(Nitrile / PU / H-Trans)

RNS(H)

### FEATURES

#### **Simplicity Of Construction**

Easy to assemble & disassemble.  
Suitable for reversing operation.

#### **Varying Stiffness Characteristics**

Special H shaped inserts provide progressively increasing stiffness characteristics, hence ensure effective shocks & vibration absorption.  
Special elastomer can be supplied to suit specific application needs.

#### **No Lubrication**

RN/RNS couplings do not require lubrication of any kind.

#### **Application :**

Mainly for pump applications such as :

Water Pumps, Slurry Pumps, Sewage Pumps, Back Pull out Pumps, Multistage Pumps, Spilt Case Pumps, API Pumps, Chemical Process Pumps, Metering/Dosing Pumps, Gear Pumps, Paper Stock Pumps, Screw Pumps, Vacuum Pumps, Fire Pumps, High Pressure Pumps.

#### **Simple / Easy Maintenance**

No complicated mechanism to demand adjustment or maintenance. Inspection and replacement of inserts is easy.

#### **Low Operational Cost**

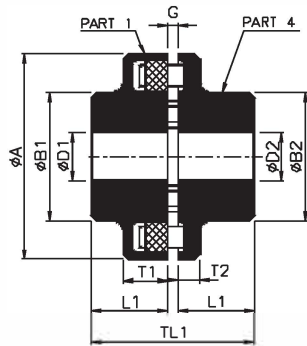
Only wear part is low cost inserts which make coupling economical in long run.

#### **Smooth & Quiet Operation**

Reduces vibration & noise arising from severe torque fluctuations. Operating temp. is -30°C to +100°C.

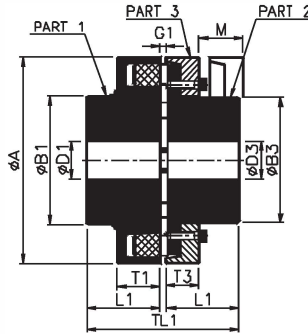
# N-FLEX RN COUPLINGS

## TYPE RN / RNS



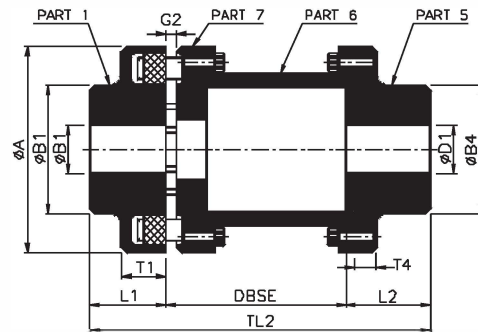
**RN(B)**

**SIZES - 68 TO 250**



**RN(A)**

**SIZES - 110 TO 250**



**RNS(H)**

**SIZES - 80 TO 250**

SIZE	RATED TORQUE Nm.	KW @ 100 RPM	RATED TORQUE Nm.	KW @ 100 RPM	RATED TORQUE Nm.	KW @ 100 RPM	MAX. SPEED (RPM)	MAX. BORE (mm)			DIMENSIONS (mm)														WEIGHT Kg			M.I. (WR <sup>2</sup> ) Kg-m <sup>2</sup>				
								D1	D2	D3	ØA	ØB1	ØB2	ØB3	ØB4	L1	L2	T1	T2	T3	T4	M	DBSE	RN(B)	RN(A)	RNS(H)	RN(B)	RN(A)	RNS(H)			
68 B	34	0.36	51	0.54	85	0.9	7000	24	28	-	68	68	45	-	-	20	-	21	8	-	-	-	-	-	-	-	0.54	-	-	0.0002	-	-
80 B, H	60	0.63	90	0.95	150	1.6	6000	30*	38	-	80	68	68	-	55	30	45	31	10	-	7	-	-	-	-	100 140	1.3	-	2.6 2.7	0.0006	-	0.001 0.001
95 B, H	100	1.1	150	1.65	250	2.8	5500	42	42	-	95	76	76	-	70	35	45	30	12	-	9	-	-	-	100 140	2.2	-	3.5 3.8	0.0013	-	0.003 0.003	
110 A, B, H	160	1.7	240	2.55	400	4.3	5300	48	48	38	110	86	86	62	85	40	50	34	14	20	11	33	-	-	100 140 180	3.3	3	5.2 5.4 6.0	0.0030	0.003	0.005 0.006 0.006	
125 A, B, H	240	2.5	360	3.75	600	6.3	5100	55	55	45	125	100	100	75	90	50	50	36	18	23	11	38	-	-	100 140 180	5.2	4.8	7.2 7.7 8.2	0.0080	0.005	0.010 0.010 0.011	
140 A, B, H	360	3.8	540	5.70	900	9.5	4900	60	60	50	140	100	100	82	100	55	65	34	20	28	15	43	-	-	100 140 180	5.6	6	10.0 10.5 11.0	0.0070	0.0080	0.018 0.019 0.020	
160 A, B, H	560	5.9	840	8.85	1400	14.8	4250	65	65	58	160	108	108	95	108	60	70	39	20	28	15	47	-	-	100 140 180	7.8	8.4	13.0 13.7 14.5	0.0100	0.0140	0.030 0.032 0.034	
180 A, B, H	880	9.2	1320	13.80	2200	23.0	3800	75	75	65	180	125	125	108	125	70	80	42	20	30	15	50	-	-	140 180	11.5	12	18.5 19.4	0.0200	0.025	0.054 0.058	
200 A, B, H	1340	14	2010	21.00	3350	35.0	3400	85	85	75	200	140	140	122	140	80	90	47	24	32	18	53	-	-	140 180 200 250	16	17	25.6 26.5 27.2 28.5	0.0400	0.040	0.095 0.100 0.105 0.110	
225 A, B, H	2000	21	3000	31.50	5000	52.5	3000	90	90	85	225	150	150	138	150	90	100	52	18	38	18	61	-	-	140 180 200 250	20	23	34.0 35.0 36.0 38.0	0.0700	0.080	0.158 0.160 0.170 0.180	
250 A, B, H	2800	29	4200	43.50	7000	72.5	2750	100	100	95	250	165	165	155	165	100	110	60	18	42	21	69	-	-	180 200 250	29	31	48.0 50.0 52.0	0.1200	0.130	0.270 0.280 0.300	

- All dimensions are in mm.
- \* = Bore 32 mm for part 5.
- G1 = 2-4mm for sizes 68 to 140, 2-6 mm for sizes 160 to 225 & 3-8 mm for size 250.
- G2 = 5 mm for sizes 80 to 140, 6 mm for sizes 160 to 225 & 8 mm for size 250.
- Part No. 5 is available with different length through Bores L2.
- Max. bore for coupling with or equivalent to DIN 6885 keys.
- For vertical installation contact RATHI.
- Weight & Inertia at Max Bore.